

9


Sarlsdown House
EXMOUTH | DEVON



A Sanctuary in The Avenues

Sarlsdown House sits proud on a quiet, residential tree-lined street in The Avenues; one of Exmouth's most sought-after neighbourhoods. The house is majestic of appearance and classical in design. Large bay windows, allowing an expanse of light into the property, are a striking feature.

A discreet, electric gated private entrance leads to a collection of ten luxurious apartments. There is level flooring throughout the house and lift access, ensuring easy reach to all floors. Each of the apartments has an allocated parking space.

The apartments are designed to facilitate modern living within an environment of exceptional quality and sophistication. The fitted kitchens come with top-of-the-range appliances, and the Mayflower bathrooms offer both opulence and comfort.

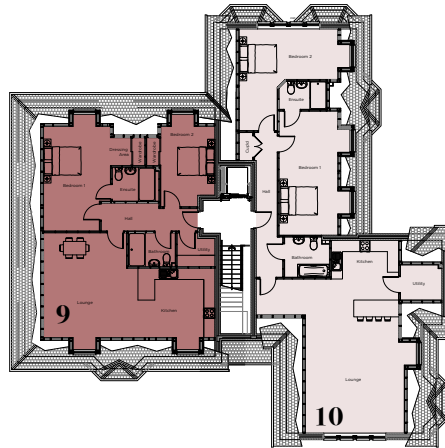
9



Second Floor - Penthouse

Apartment 9 is the first of two stunning penthouses situated on the second floor of the property, both of which are bright and airy. As you step inside you are welcomed by a wide, spacious hallway that leads to a grand open plan kitchen, dining and living area.

The penthouse offers two double bedrooms, all of which have fitted wardrobes. The master bedroom has its own luxurious en-suite bathroom. There are storage cupboards along the hallway and a family bathroom too.



Internal Areas:

Kitchen/Dining/Living
9.16m x 5.59m - 30'1" x 18'4"

Bedroom 1
4.66m x 5.59m - 15'3" x 18'4"

Bedroom 2
2.90m x 4.29m - 9'6" x 14'0"

Total Internal Area:
103 Sq m / 1108.6 Sq ft

