

8


Sarlsdown House
EXMOUTH | DEVON



A Sanctuary in The Avenues

Sarlsdown House sits proud on a quiet, residential tree-lined street in The Avenues; one of Exmouth's most sought-after neighbourhoods. The house is majestic of appearance and classical in design. Large bay windows, allowing an expanse of light into the property, are a striking feature.

A discreet, electric gated private entrance leads to a collection of ten luxurious apartments. There is level flooring throughout the house and lift access, ensuring easy reach to all floors. Each of the apartments has an allocated parking space.

The apartments are designed to facilitate modern living within an environment of exceptional quality and sophistication. The fitted kitchens come with top-of-the-range appliances, and the Mayflower bathrooms offer both opulence and comfort.

For enquiries please call Wilkinson Grant & Co on 01392 455926.


TOWER GATE
ESTATES

Selling agent

NEW HOMES

01392 455926



8


Sarlsdown House
EXMOUTH | DEVON

First Floor

Internal Areas:

Kitchen/Dining/Living
5.41m x 5.10m - 17'7" x 16'7"

Bedroom 1
3.96m x 3.51m - 12'9" x 11'5"

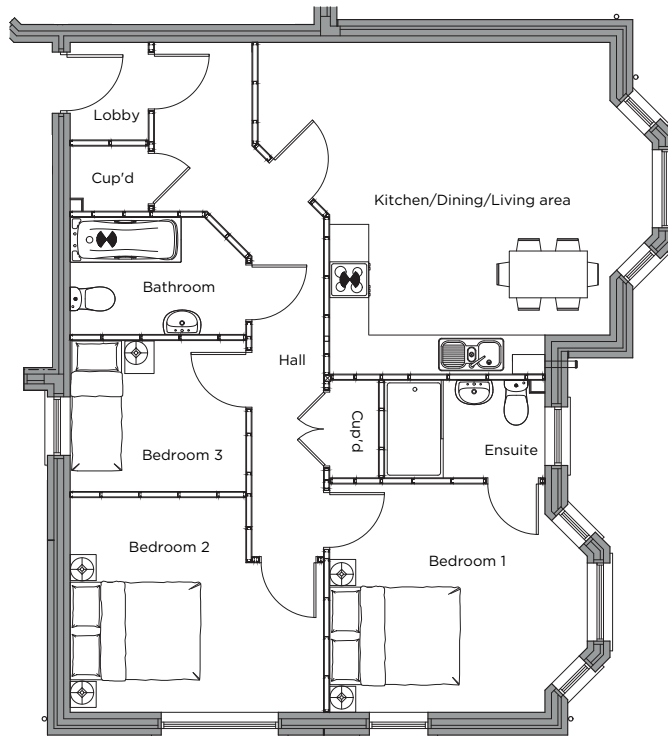
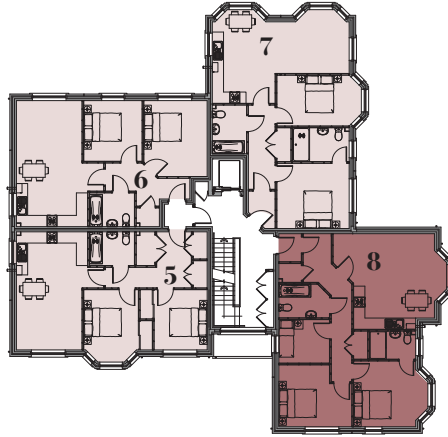
Bedroom 2
3.89m x 3.30m - 12'7" x 10'8"

Bedroom 3
2.70m x 2.32m - 8'8" x 7'6"

Total Internal Area:
82.37 Sq m / 886.6 Sq ft

Apartment 8 is the largest of the apartments on the first floor and offers a generous three bedrooms. These consist of two double rooms and a single room. The master bedroom showcases a feature bay window as well as an opulent en-suite bathroom. There is also a large family bathroom off the hallway.

The open plan kitchen, dining and living area affords ample space and features a large bay window overlooking the development and its pretty gardens.




TOWER GATE
ESTATES

Selling agent
WG Wilkinson
Grant & Co
NEW HOMES

01392 455926