

7


Sarlsdown House
EXMOUTH | DEVON



A Sanctuary in The Avenues

Sarlsdown House sits proud on a quiet, residential tree-lined street in The Avenues; one of Exmouth's most sought-after neighbourhoods. The house is majestic of appearance and classical in design. Large bay windows, allowing an expanse of light into the property, are a striking feature.

A discreet, electric gated private entrance leads to a collection of ten luxurious apartments. There is level flooring throughout the house and lift access, ensuring easy reach to all floors. Each of the apartments has an allocated parking space.

The apartments are designed to facilitate modern living within an environment of exceptional quality and sophistication. The fitted kitchens come with top-of-the-range appliances, and the Mayflower bathrooms offer both opulence and comfort.

For enquiries please call Wilkinson Grant & Co on 01392 455926.


TOWER GATE
ESTATES

Selling agent

NEW HOMES
01392 455926



First Floor

Internal Areas:

Kitchen/Dining/Living
7.30m x 4.99m - 23'9" x 16'3"

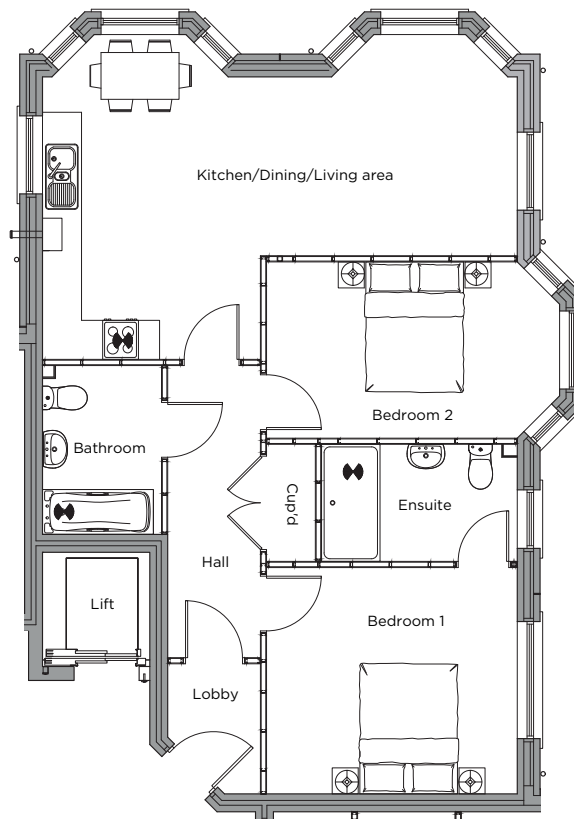
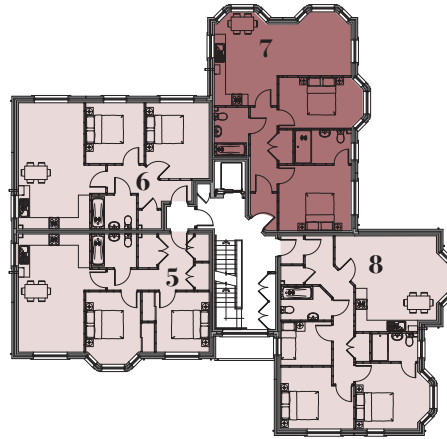
Bedroom 1
3.85m x 3.48m - 12'6" x 11'4"

Bedroom 2
4.50m x 2.71m - 14'7" x 8'8"

Total Internal Area:
74.86 Sq m / 805.8 Sq ft

The centrepiece of this grand, two-bedroom apartment is the generous open plan kitchen, dining and living area. It benefits from two large feature bay windows which add majesty and character to the space, as well as an expanse of light. The windows look out onto the surrounding development with its landscaped gardens.

There are two good-sized double bedrooms, one of which benefits from another bay window. The master bedroom has a luxurious en-suite bathroom, with a further family bathroom off the hall.



01392 455926