

3


Sarlsdown House
EXMOUTH | DEVON



A Sanctuary in The Avenues

Sarlsdown House sits proud on a quiet, residential tree-lined street in The Avenues; one of Exmouth's most sought-after neighbourhoods. The house is majestic of appearance and classical in design. Large bay windows, allowing an expanse of light into the property, are a striking feature.

A discreet, electric gated private entrance leads to a collection of ten luxurious apartments. There is level flooring throughout the house and lift access, ensuring easy reach to all floors. Each of the apartments has an allocated parking space.

The apartments are designed to facilitate modern living within an environment of exceptional quality and sophistication. The fitted kitchens come with top-of-the-range appliances, and the Mayflower bathrooms offer both opulence and comfort.

For enquiries please call Wilkinson Grant & Co on 01392 455926.


TOWER GATE
ESTATES

Selling agent

NEW HOMES
01392 455926



3


Sarlsdown House
EXMOUTH | DEVON

Ground Floor

Internal Areas:

Kitchen/Dining/Living
7.22m x 4.95m - 23'6" x 16'2"

Bedroom 1
3.81m x 3.48m - 12'5" x 11'4"

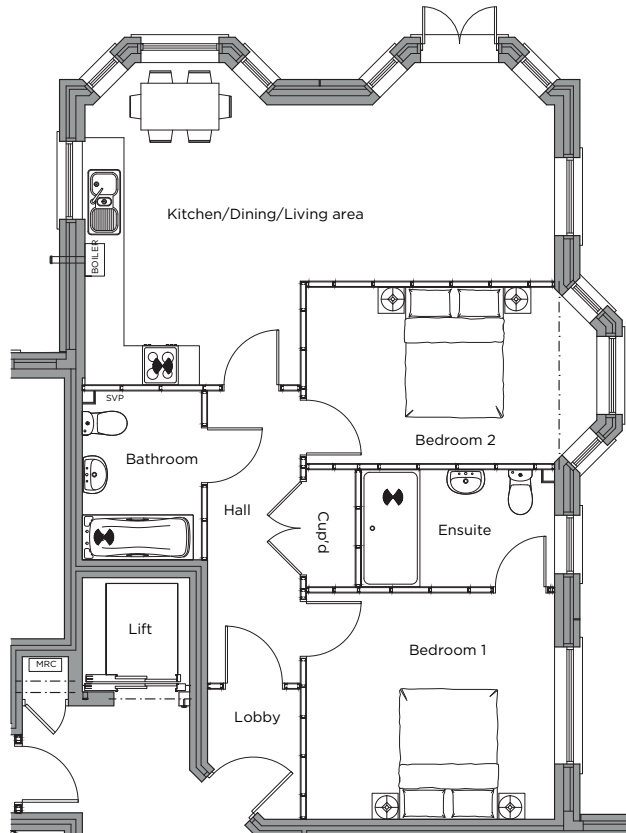
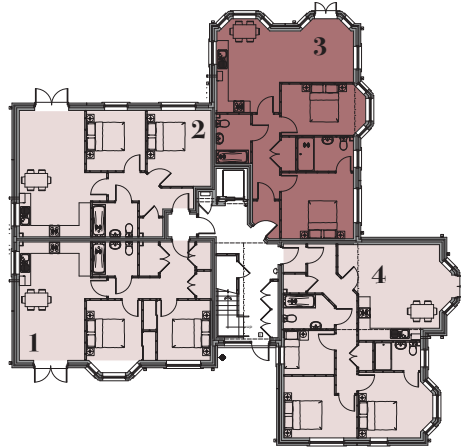
Bedroom 2
4.46m x 2.71m - 14'6" x 8'8"

Total Internal Area:
74.86 Sq m / 805.7 Sq ft

This superb two-bedroom ground floor apartment is sure to make for a happy home. On entry, you have a direct view of the open plan kitchen, dining and living area, which has a feature bay window that overlooks your private garden. A set of French doors lead from the lounge to the garden and patio area.

The master bedroom is of excellent size with ample room for a king-sized bed, and benefits from a luxurious en-suite bathroom. The second bedroom is also well proportioned and offers a large bay window.

There is a spacious family bathroom and large storage cupboard in the hallway.




TOWER GATE
ESTATES

Selling agent
WG Wilkinson
Grant & Co
NEW HOMES

01392 455926