

2


Sarlsdown House
EXMOUTH | DEVON



A Sanctuary in The Avenues

Sarlsdown House sits proud on a quiet, residential tree-lined street in The Avenues; one of Exmouth's most sought-after neighbourhoods. The house is majestic of appearance and classical in design. Large bay windows, allowing an expanse of light into the property, are a striking feature.

A discreet, electric gated private entrance leads to a collection of ten luxurious apartments. There is level flooring throughout the house and lift access, ensuring easy reach to all floors. Each of the apartments has an allocated parking space.

The apartments are designed to facilitate modern living within an environment of exceptional quality and sophistication. The fitted kitchens come with top-of-the-range appliances, and the Mayflower bathrooms offer both opulence and comfort.

For enquiries please call Wilkinson Grant & Co on 01392 455926.


TOWER GATE
ESTATES

Selling agent

NEW HOMES

01392 455926

2


Sarlsdown House
EXMOUTH | DEVON

Ground Floor

Internal Areas:

Kitchen/Dining/Living
3.76m x 6.68m - 12'3" x 21'9"

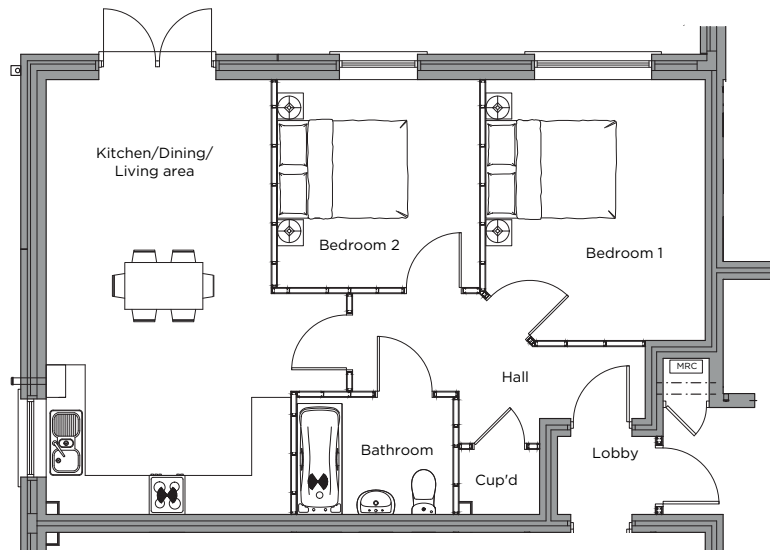
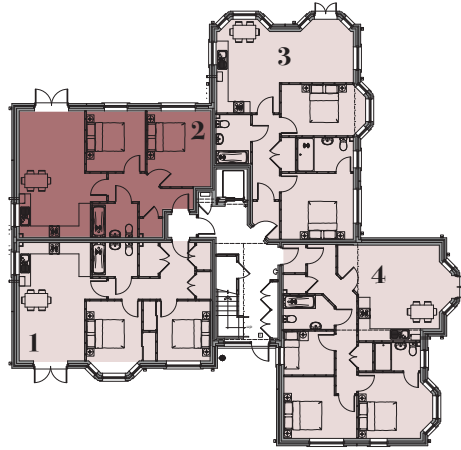
Bedroom 1
3.37m x 4.01m - 11'0" x 13'1"

Bedroom 2
3.20m x 3.19m - 10'4" x 10'4"

Total Internal Area:
64.41 Sq m / 693.3 Sq ft

Apartment 2 is a spacious two-double bedroom home with a generous open plan kitchen, dining and living area. French doors open out onto the garden and patio area which is a highlight of this property. It is ideal for those who would enjoy the privacy of their own garden.

There is a generous family bathroom and a practical storage cupboard in the hall.




TOWER GATE
ESTATES

Selling agent
WG Wilkinson
Grant & Co
NEW HOMES

01392 455926