

# W

# woodbury house

EXMOUTH | EAST DEVON



## Apartment 8

Woodbury House is an elegant building of classic design, on a tree-lined avenue in one of Exmouth's most desirable addresses. Woodbury House offers ten, luxury two-bedroom apartments.

There is a landscaped courtyard to the front of the house and an allocated parking space for each apartment.

Inside, there is a communal hallway allowing access to the ground floor apartments. A stairway leads up to the first floor and penthouse apartments. There is lift access and level flooring throughout.

There are four apartments on the ground floor and the first floor, and two apartments on the second floor.

Three of the apartments on the ground floor benefit from a beautiful outdoor space, ideal for children to play in, or for summer entertaining around a barbecue.

Woodbury House has a fully-fitted audio door entry system, allowing secure and private access.

te

TOWERGATE  
ESTATES

Selling agent

**WG** Wilkinson  
Grant & Co  
NEW HOMES

01392 455926

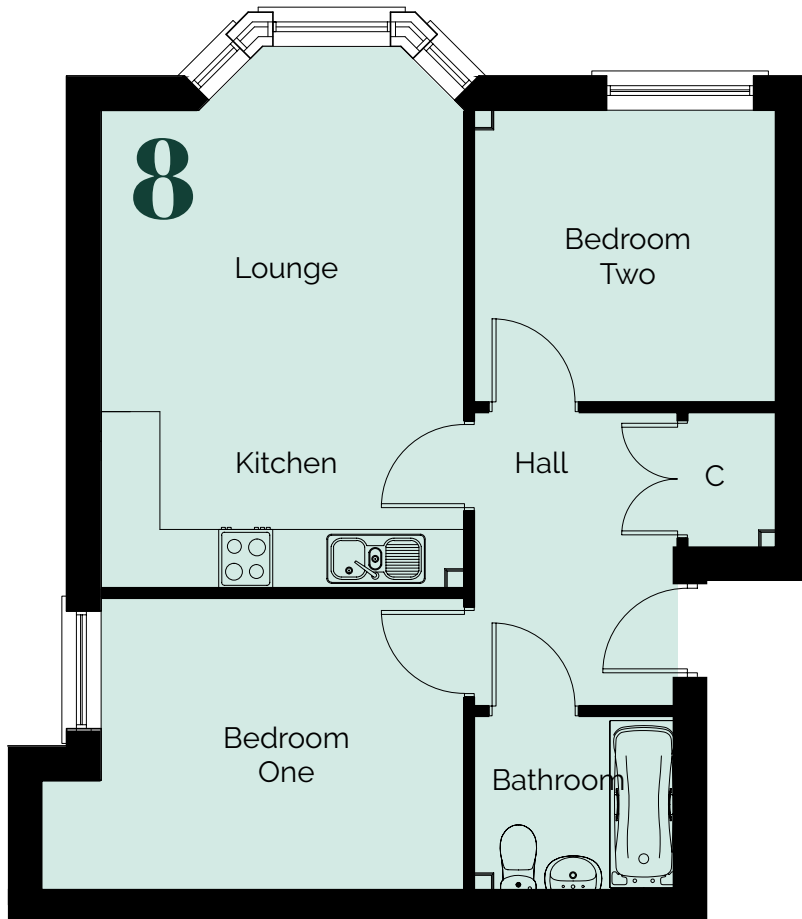
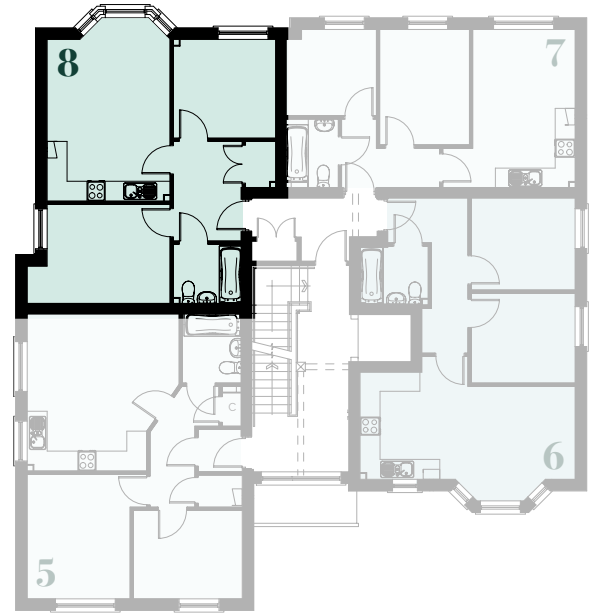


# woodbury house

EXMOUTH | EAST DEVON

At the heart of this first floor apartment is the spacious, open plan kitchen and living area. A generous bay window adds to the light and airy feel inside this home. There are two double bedrooms and a family bathroom leading from the hall. There is also a storage cupboard, great for the essentials.

## First Floor



## Apartment 8

Lounge / Kitchen	4.87m x 3.70m	16'0" x 12'2"
Bedroom One	4.30m x 3.00m	14'1" x 9'10"
Bedroom Two	3.09m x 2.97m	10'2" x 9'9"

All measurements given are approximate, for further details please contact the agents. Dimensions given are done so in good faith and before construction has commenced. They are approximate and for guidance only and should not be used for furniture or appliance purchases. Purchasers are strongly advised to confirm actual dimensions when the property is nearing completion or is completed.