

W

woodbury house

EXMOUTH | EAST DEVON



Apartment 10

Woodbury House is an elegant building of classic design, on a tree-lined avenue in one of Exmouth's most desirable addresses. Woodbury House offers ten, luxury two-bedroom apartments.

There is a landscaped courtyard to the front of the house and an allocated parking space for each apartment.

Inside, there is a communal hallway allowing access to the ground floor apartments. A stairway leads up to the first floor and penthouse apartments. There is lift access and level flooring throughout.

There are four apartments on the ground floor and the first floor, and two apartments on the second floor.

Three of the apartments on the ground floor benefit from a beautiful outdoor space, ideal for children to play in, or for summer entertaining around a barbecue.

Woodbury House has a fully-fitted audio door entry system, allowing secure and private access.

te

TOWERGATE
ESTATES

Selling agent

WG Wilkinson
Grant & Co
NEW HOMES

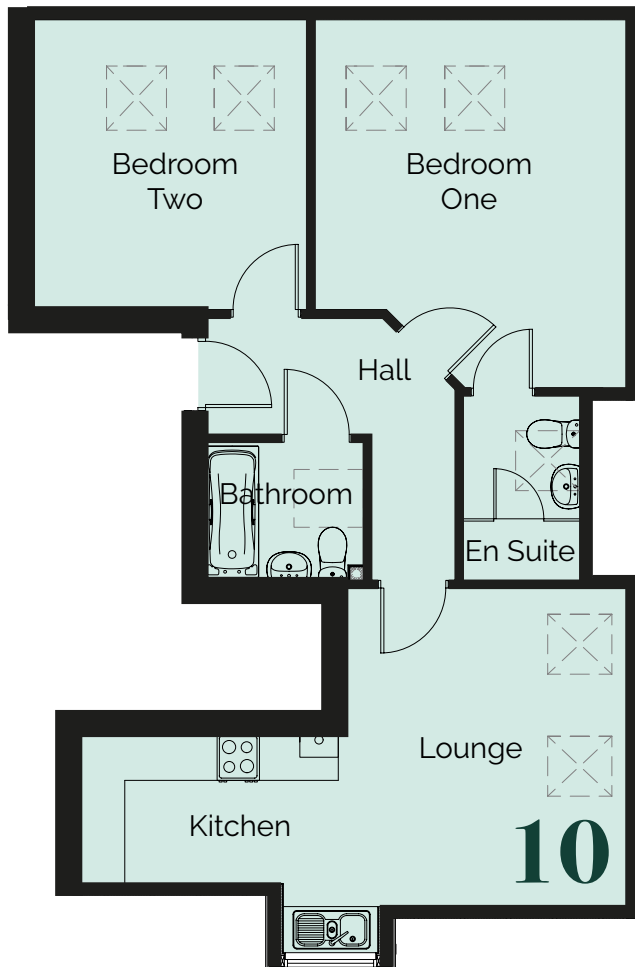
01392 455926



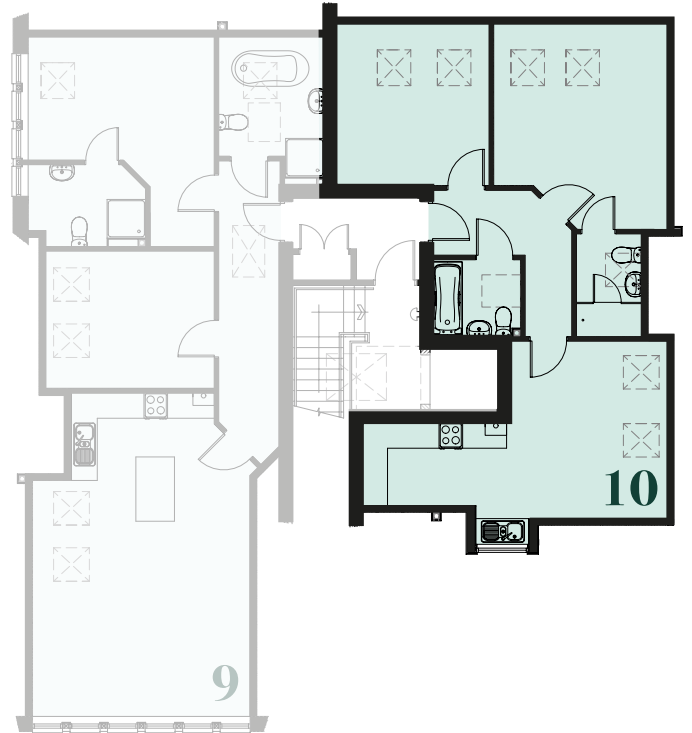
woodbury house

EXMOUTH | EAST DEVON

The second of two luxury penthouse apartments, this spacious home has a good-size kitchen and living area. The master bedroom has ample room for a king-size bed, with an ensuite bathroom. There is a second double bedroom and a family bathroom leading off the hall. Skylights throughout the apartment add to the feeling of height and space.



Second Floor



Apartment 10

Lounge / Kitchen	3.46m x 1.93m	11'4" x 6'4"
Bedroom One	4.03m x 4.78m	13'3" x 15'8"
Bedroom Two	3.76m x 3.57m	12'4" x 11'8"

All measurements given are approximate, for further details please contact the agents. Dimensions given are done so in good faith and before construction has commenced. They are approximate and for guidance only and should not be used for furniture or appliance purchases. Purchasers are strongly advised to confirm actual dimensions when the property is nearing completion or is completed.



TOWERGATE
ESTATES

Selling agent



NEW HOMES

01392 455926